



# PETER MORTON ACADEMY OF JUDO JUJITSU KARATE

モートン流自修館柔術

## Administration Structure

### 1. Structure

### 2. Hombu

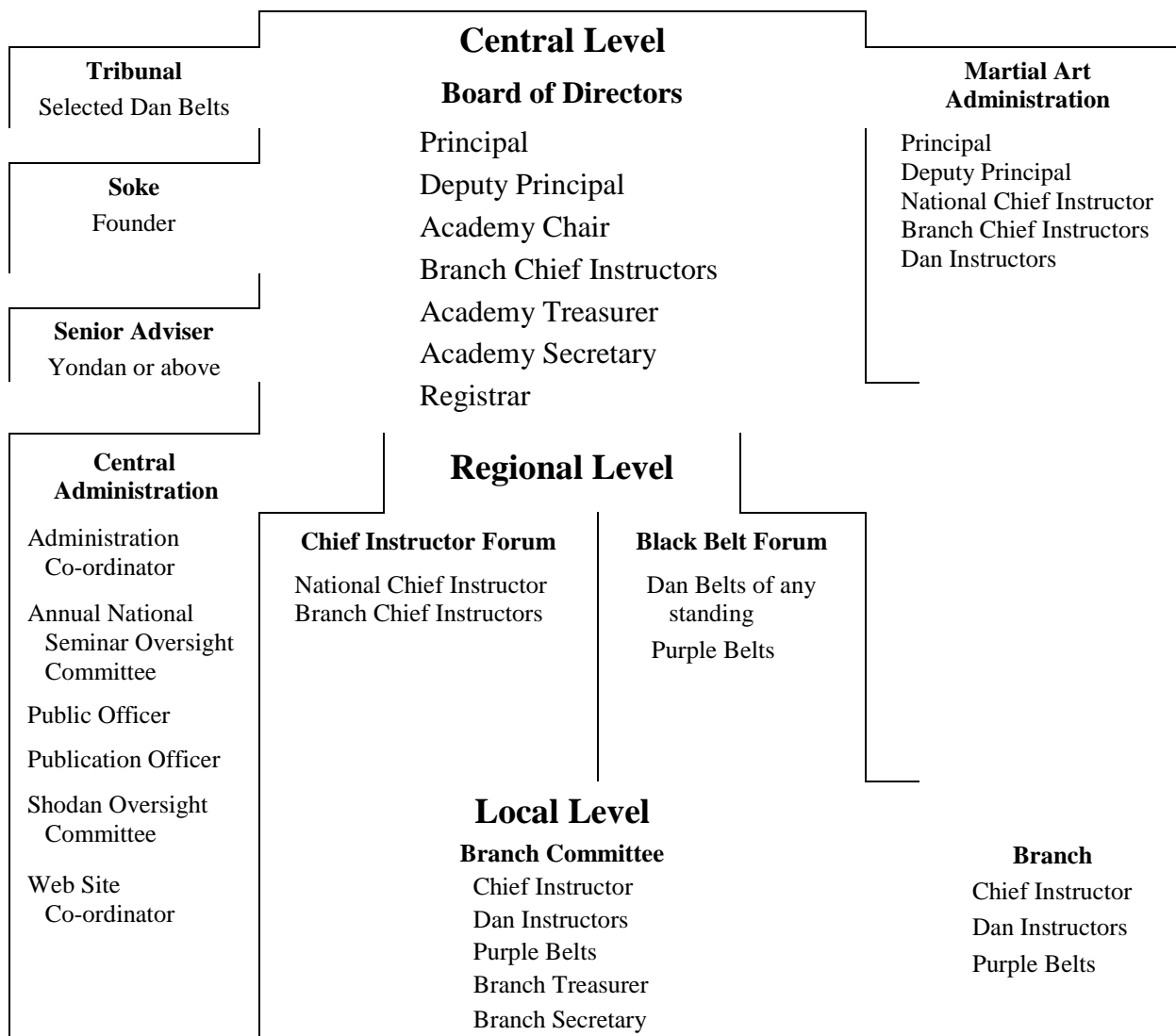
#### Administration

*The prime body in charge of and responsible for Academy affairs*

#### Hombu

*Headquarters. Encompasses both Academy martial art and administration*

### 1. Structure



### 2. Hombu

2.1 The Hombu will be as determined by the management committee, vested in and belong to the Academy and, unless otherwise determined, in the home territory of the Principal.